



Baseline Data Template

Partners:

Date:



Whole Population Result

Result Statement:

Indicator:

Measurement Tool:



**Current Conditions:
Indicator Trend Lines for
Whole Population and
Program Population**

Whole Population Indicator Trend Lines

Enter data, if available, including:

- ✓ *Whole population data*
- ✓ *5-year trend over time*
- ✓ *Disaggregated baseline data*



Insert Chart(s) on Whole Population Indicator Trend Lines



Insert Program Population and Related Performance Measures

What group within or portion of the whole population do you propose to focus on for this work?

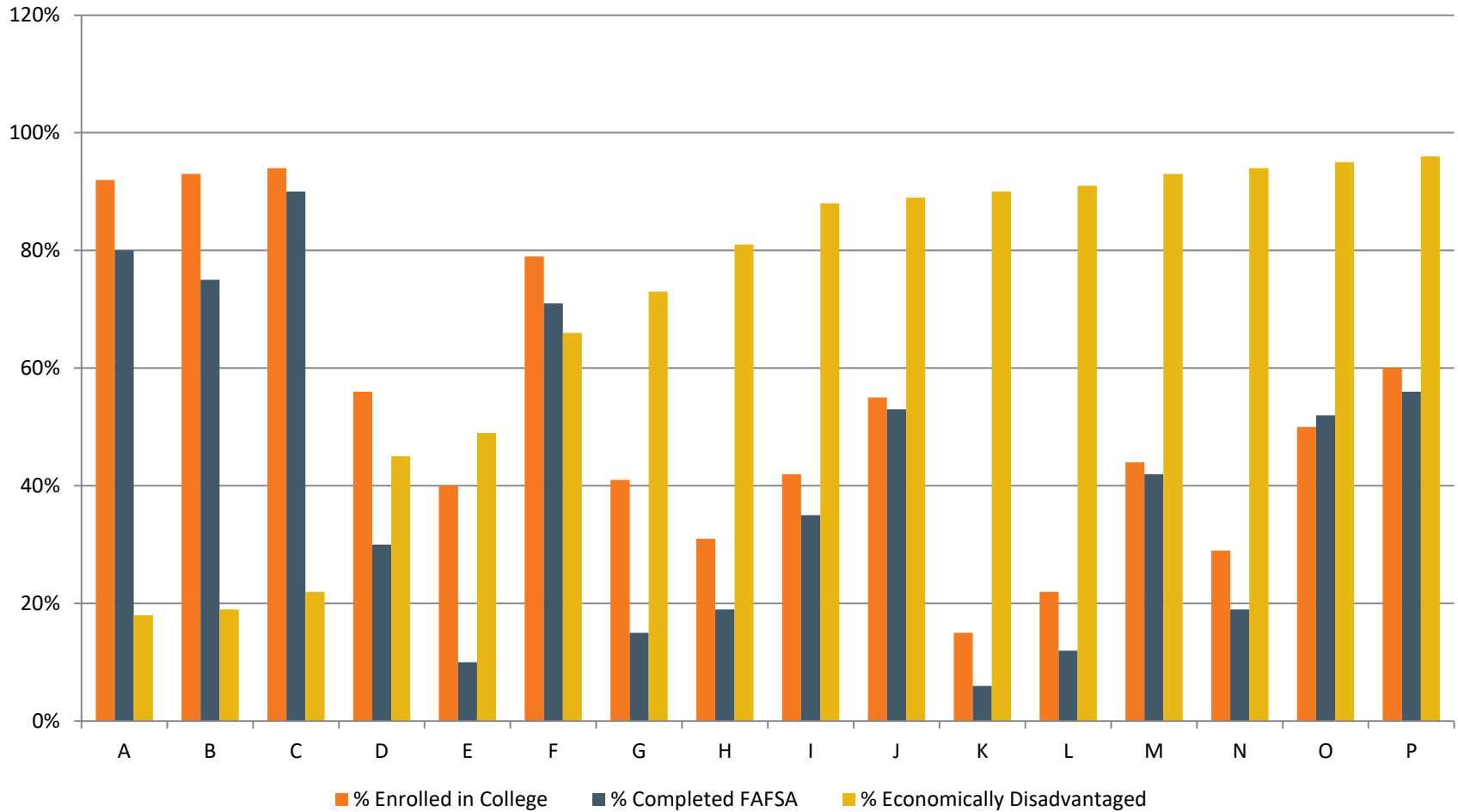
How are they currently performing?



StriveTogether

**EXAMPLE:
For Discussion
Purposes Only**

In Camden County, college enrollment is higher in schools with higher FAFSA completion, particularly those with large populations of economically disadvantaged students.



Sources: Camden City Schools, Ohio Department of Education Federal Student Aid Data Center, National Student Clearinghouse



Whole Population Result

Result Statement:

Increase College Enrollment by 17% by June 2018

Indicator:

Free Application for Federal Student Aid (FAFSA)
Completion Rates

Measurement Tool:

FAFSA Completion Rates Reported Daily by USDOE



Whole Population: 6,856 9-12 Students enrolled in CCS

<u>By Grade Level</u>	<u>%</u>	<u>Number</u>
9 th Grade	26.6%	1,823
10 th Grade	25.6%	1,754
11 th Grade	25.1%	1,723
12 th Grade	22.7%	1,556
<u>Race/Equity</u>	<u>%</u>	<u>Number</u>
White	35%	2,195
African American/Black	59.7%	3,747
Latino/Hispanic	3.6%	227
Multiracial	1.7%	106
<u>Economically Disadvantaged</u>	<u>%</u>	<u>Number</u>
Not Economically Disadvantaged	29.2%	1,960
Economically Disadvantaged	70.8%	4,753

Source: Ohio Department of Education

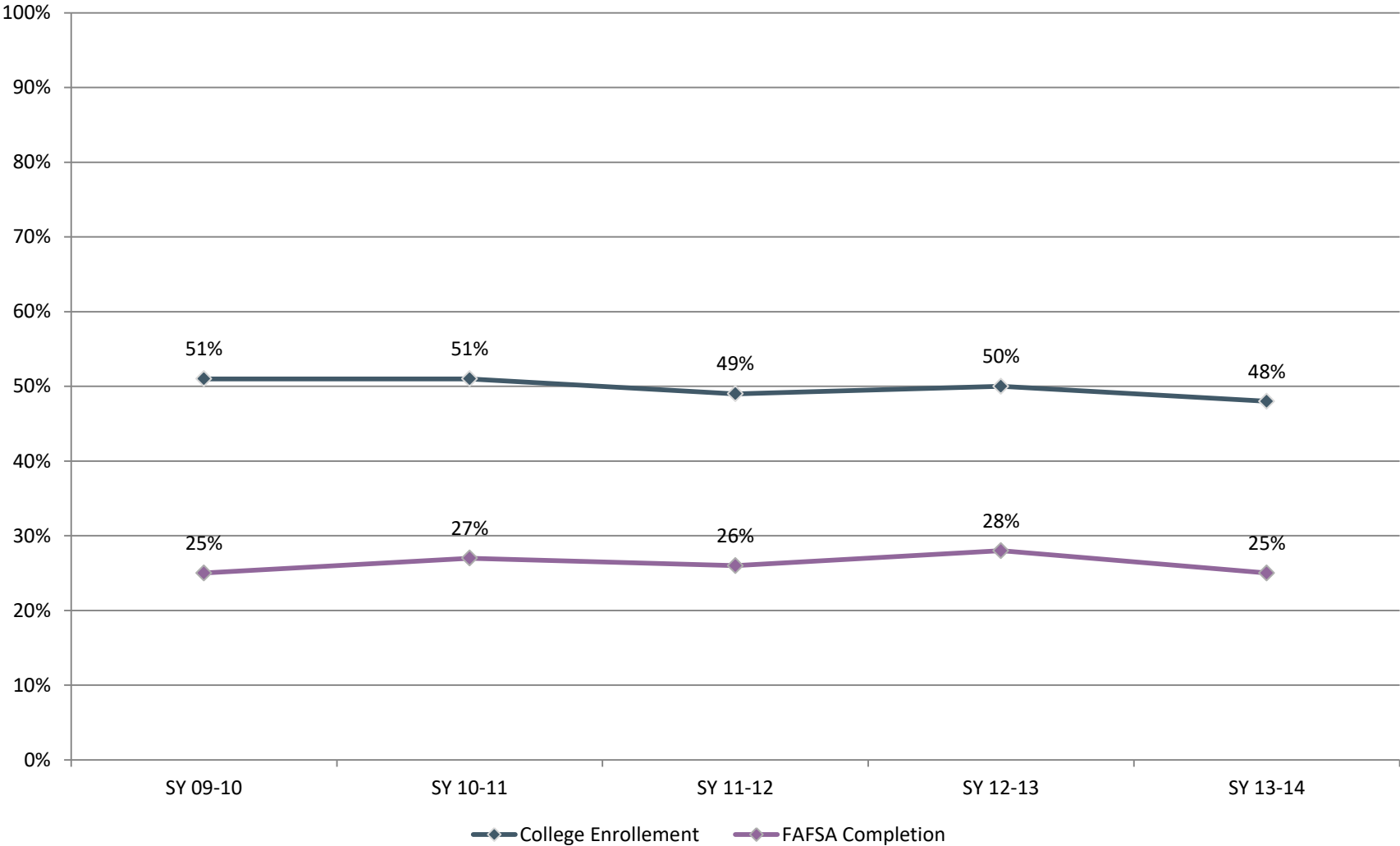


Program Population: 1,556 enrolled in CCS

<u>Race/Equity</u>	<u>%</u>	<u>Number</u>	<u>FAFSA</u>	<u>Enrollment</u>
White	43.7%	658	45%(296)	91% (599)
African American/Black	52.8%	794	18% (143)	40% (318)
Latino/Hispanic	1.9%	29	20% (6)	37% (11)
Multiracial	1.6%	24	17% (4)	25% (6)
<u>Economically Disadvantaged</u>	<u>%</u>	<u>Number</u>	<u>FAFSA</u>	<u>Enrollment</u>
Not Economically Disadvantaged	30.5%	467	15% (70)	95% (444)
Economically Disadvantaged	69.5%	1,063	34% (361)	16% (276)

Sources: Camden City Schools, Ohio Department of Education Federal Student Aid Data Center, National Student Clearinghouse

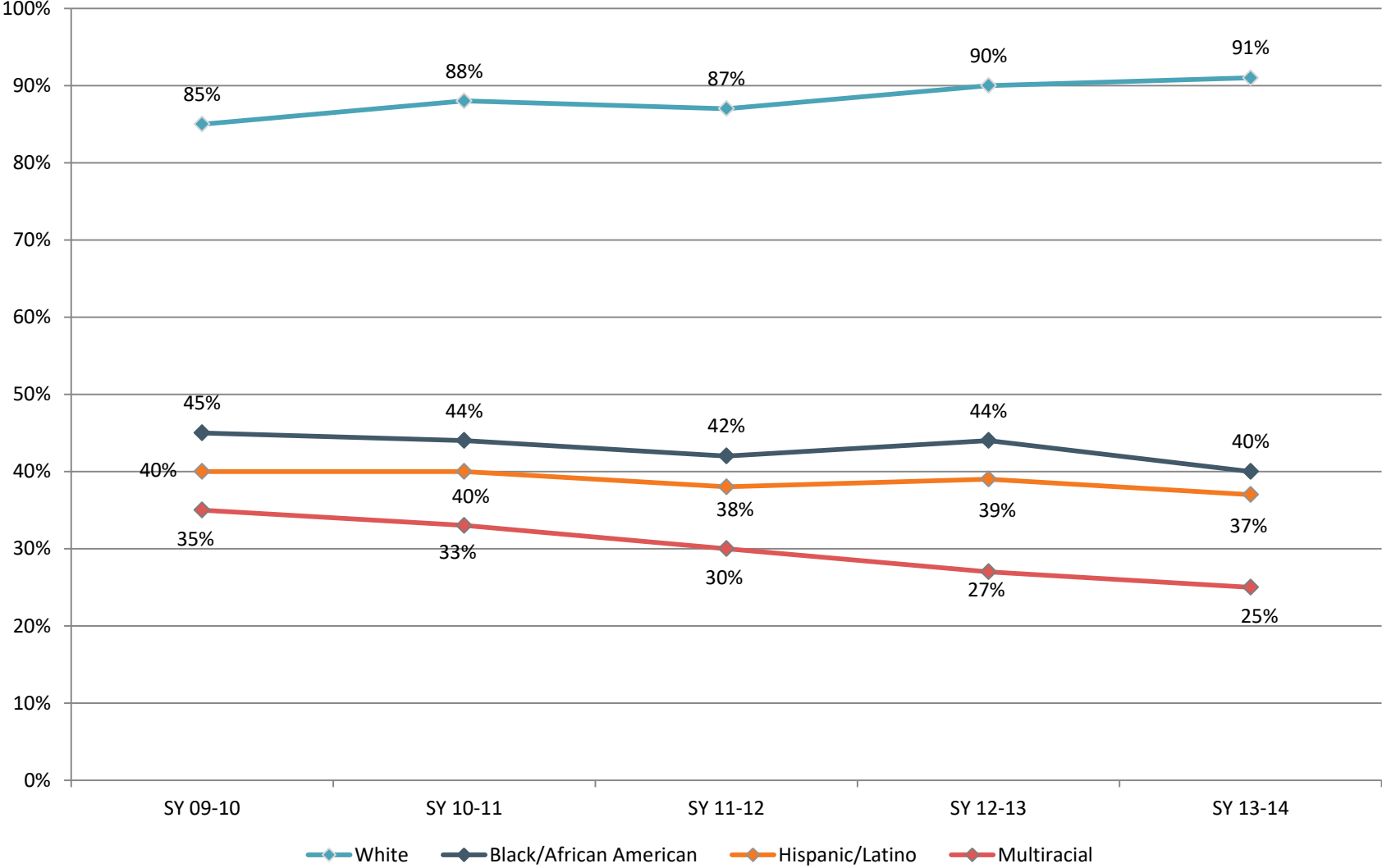
5-Year Trend: College Enrollment & FAFSA Completion District Wide



Sources: Camden City Schools, Ohio Department of Education Federal Student Aid Data Center, National Student Clearinghouse



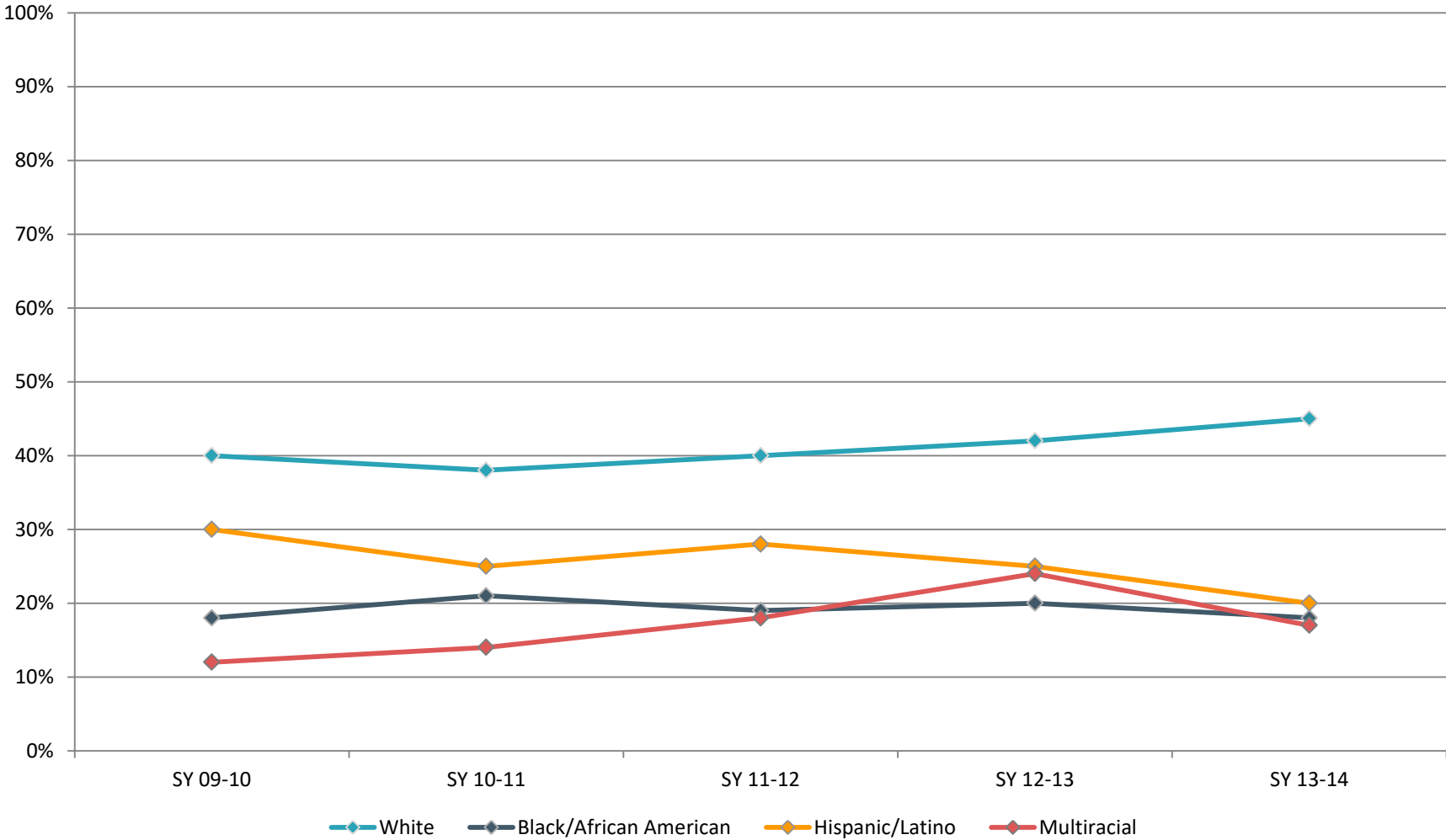
5-Year Trend: College Enrollment by Race



Sources: Camden City Schools, National Student Clearinghouse



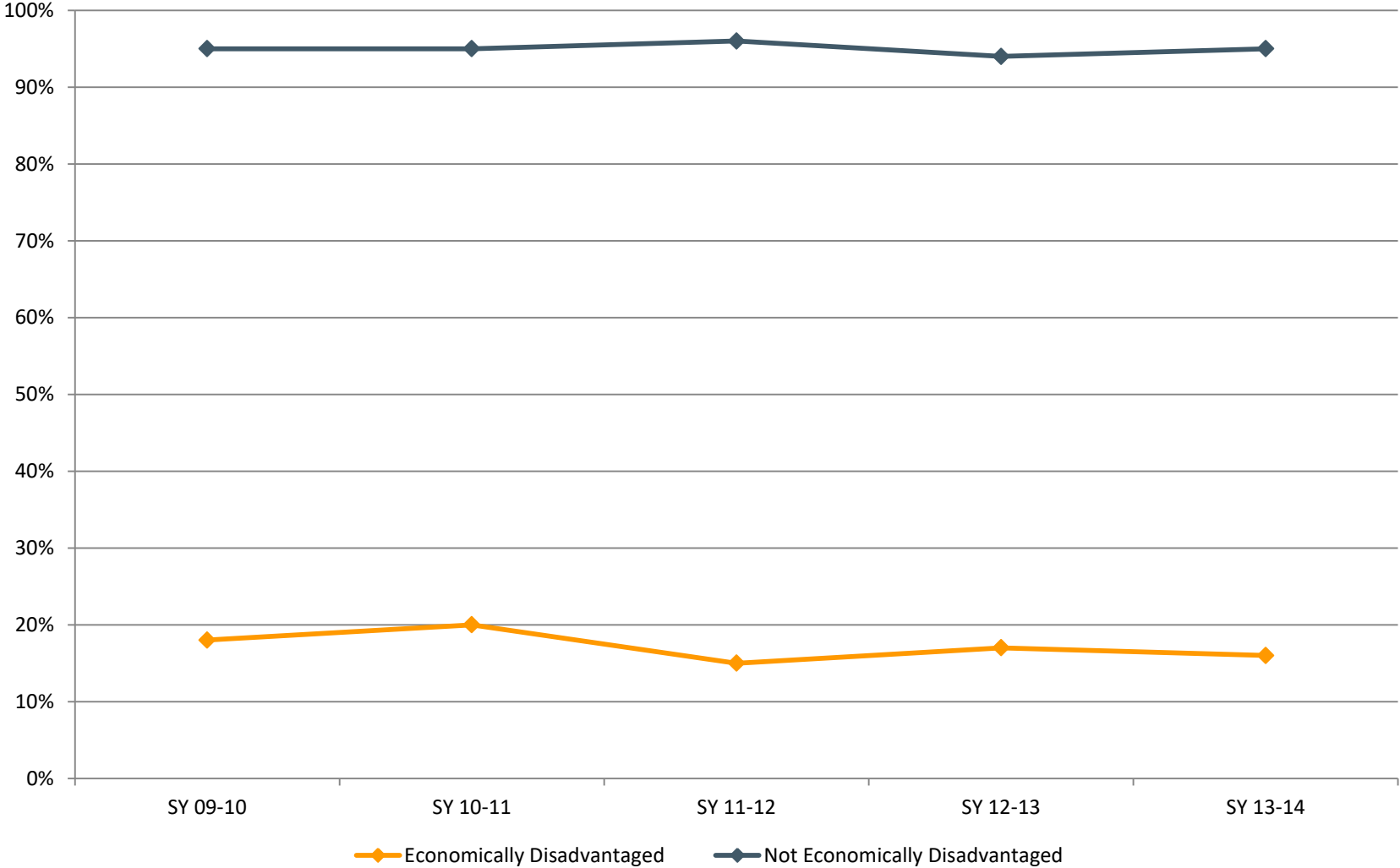
5-Year Trend: FAFSA Completion by Race



Sources: Camden City Schools, Ohio Department of Education Federal Student Aid Data Center



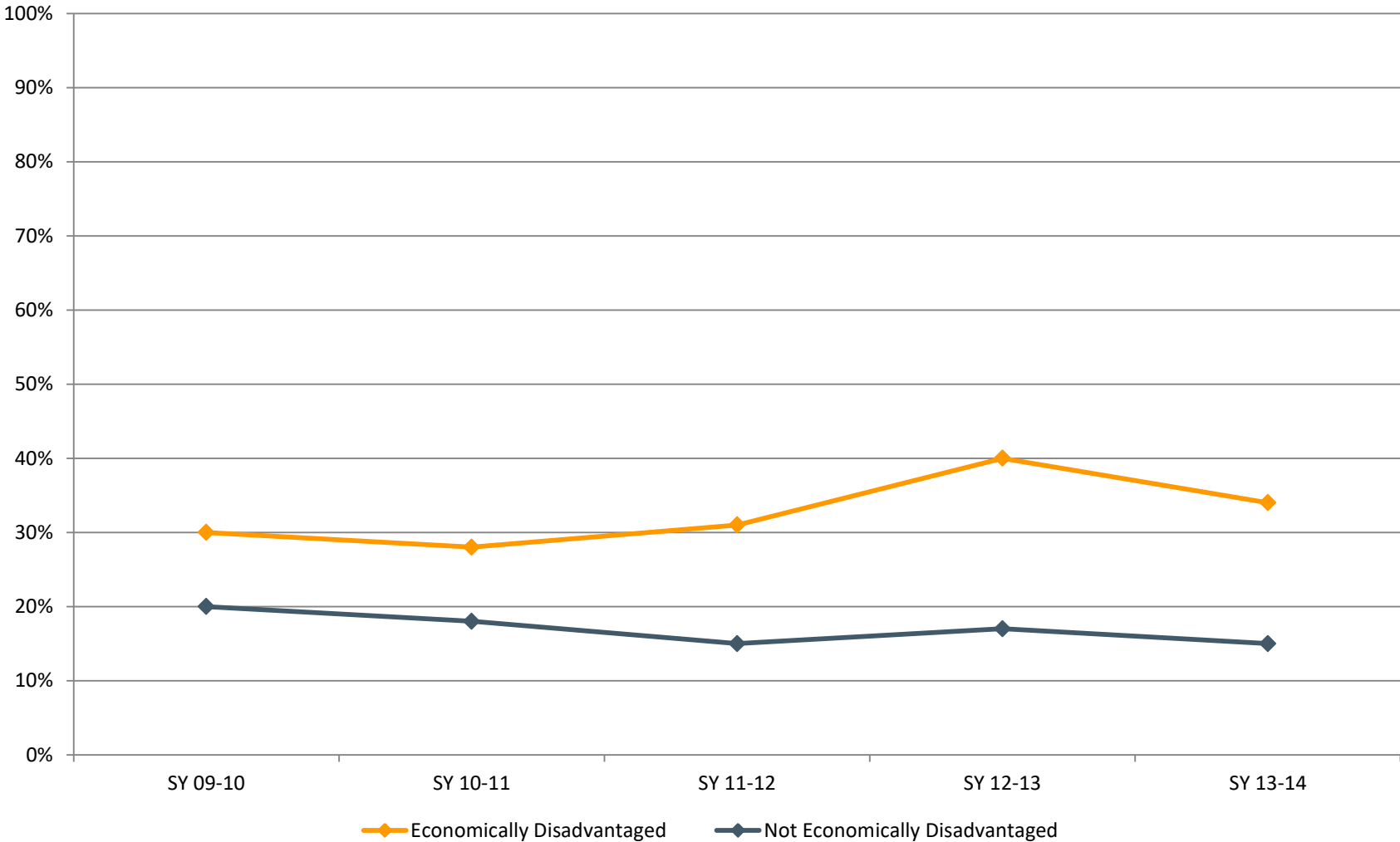
5-Year Trend: College Enrollment by SES



Sources: Camden City Schools, National Student Clearinghouse



5-Year Trend: FAFSA Completion by SES



Sources: Camden City Schools, Ohio Department of Education Federal Student Aid Data Center



StriveTogether

Current Conditions: Program Population and Performance Measures

Program Population: 1,000 high school seniors in 11 schools
Performance Measure: # of Students Served (How Much?)

Partner	# of students served	% White	% Black	% Hispanic	% Multiracial	% Eco Dis	FAFSA	% Enrolled
A	40	15%	65%	20%	0%	93%	56%	50%
B	93	75%	12%	10%	3%	26%	24%	81%
C	100	10%	72%	8%	10%	85%	72%	68%
D	25	0%	100%	0%	0%	100%	39%	32%
E	135	10%	70%	20%	0%	81%	91%	75%
F	150	8%	81%	11%	0%	90%	44%	40%
G	75	15%	78%	7%	0%	85%	70%	45%
H	82	7%	86%	7%	20%	18%	15%	84%
I	150	25%	70%	4%	1%	67%	60%	50%
J	50	80%	10%	10%	0%	15%	5%	97%
K	100	3%	90%	7%	0%	98%	25%	15%

Sources: Camden City Schools, ODE Federal Student Aid Data Center, National Student Clearinghouse



CEA Partner Program Offerings

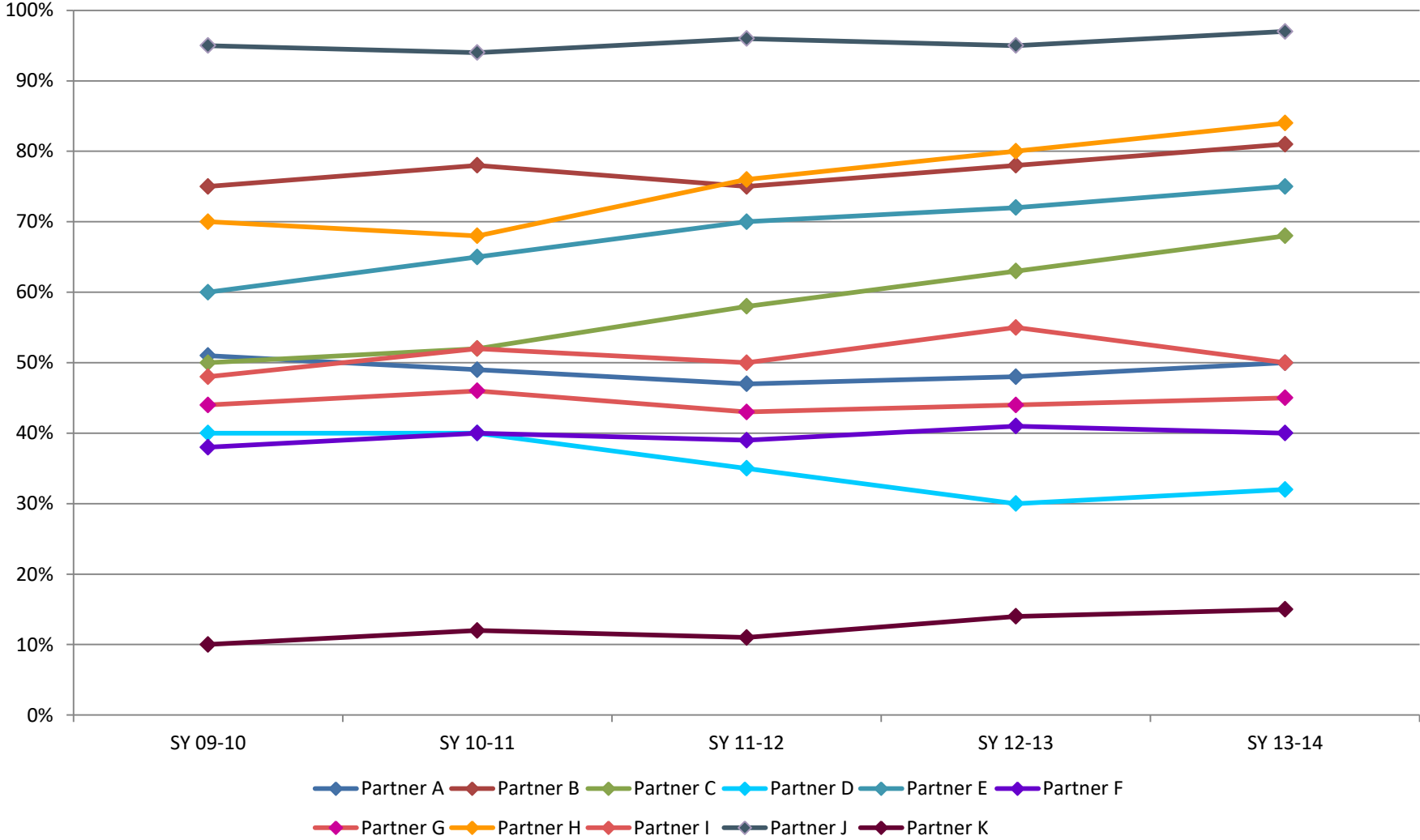
Performance Measure: Programs Offered (How Much?)

Partner	College Visits	Mentoring	SAT/ACT Prep	Homework Help	OGT Prep	College Application Support	FAFSA Support
A	X	X		X	X		X
B	X		X			X	
C	X				X	X	X
D	X	X		X			
E	X		X		X	X	X
F	X			X	X		
G	X	X			X		X
H	X		X		X	X	
I	X	X		X			X
J	X	X	X	X	X	X	
K	X	X		X			

Source: CEA Partners



5-Year Trend: CEA Partner College Enrollment Program Performance (How Well?)



Sources: Camden City Schools, National Student Clearinghouse

