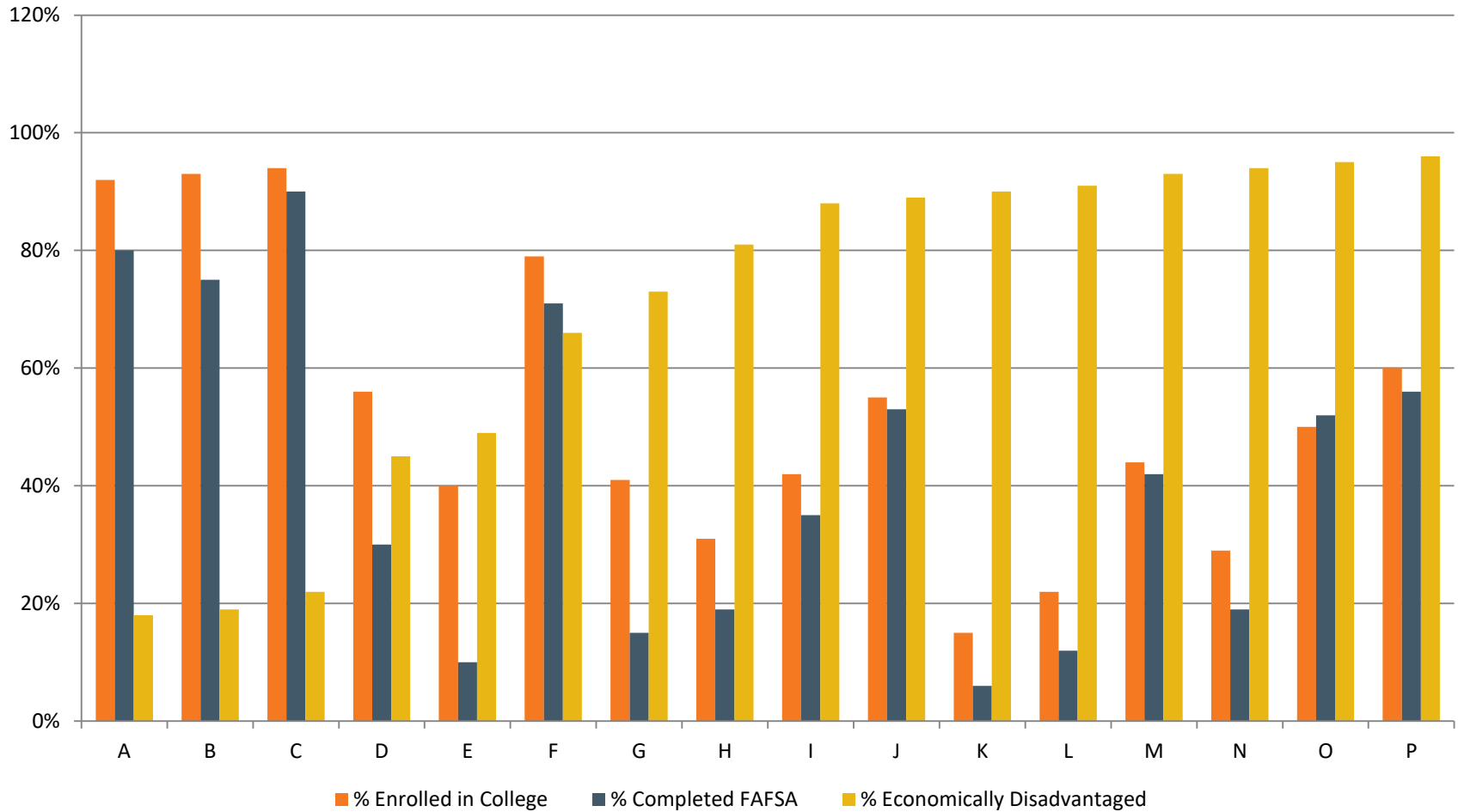


**.StriveTogether**

# **Current Conditions: Whole Population Results**

In Camden County, college enrollment is higher in schools with higher FAFSA completion, particularly those with large populations of economically disadvantaged students.



Sources: Camden City Schools, Ohio Department of Education Federal Student Aid Data Center, National Student Clearinghouse



## Whole Population Result

### Result Statement:

Increase College Enrollment by 17% by June 2018

### Indicator:

Free Application for Federal Student Aid (FAFSA)  
Completion Rates

### Measurement Tool:

FAFSA Completion Rates Reported Daily by USDOE



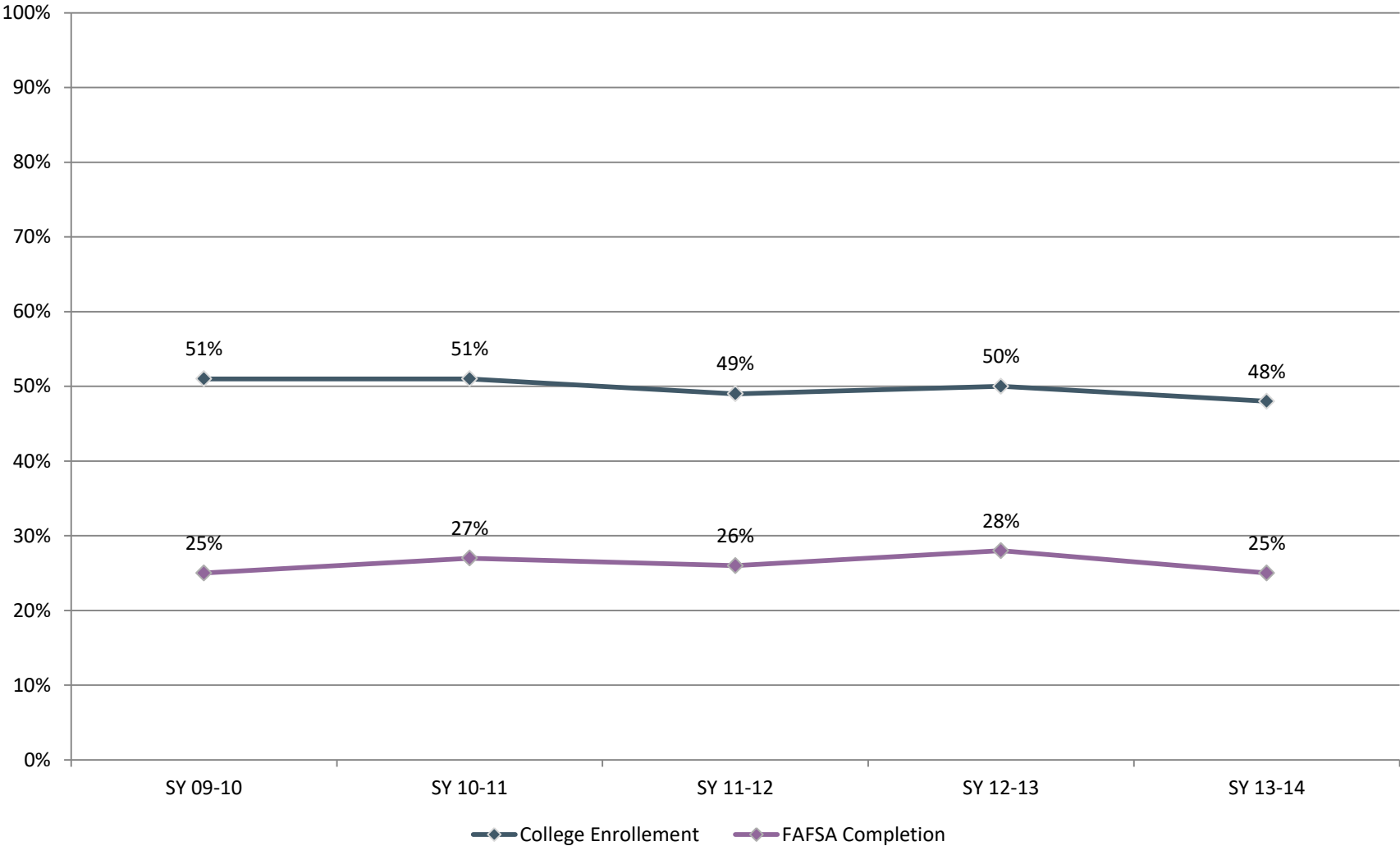
# Whole Population: 6,856 9-12 Students enrolled in CCS

<b><u>By Grade Level</u></b>	<b><u>%</u></b>	<b><u>Number</u></b>
9 <sup>th</sup> Grade	26.6%	1,823
10 <sup>th</sup> Grade	25.6%	1,754
11 <sup>th</sup> Grade	25.1%	1,723
12 <sup>th</sup> Grade	22.7%	1,556
<b><u>Race/Equity</u></b>	<b><u>%</u></b>	<b><u>Number</u></b>
White	35%	2,195
African American/Black	59.7%	3,747
Latino/Hispanic	3.6%	227
Multiracial	1.7%	106
<b><u>Economically Disadvantaged</u></b>	<b><u>%</u></b>	<b><u>Number</u></b>
Not Economically Disadvantaged	29.2%	1,960
Economically Disadvantaged	70.8%	4,753

Source: Ohio Department of Education



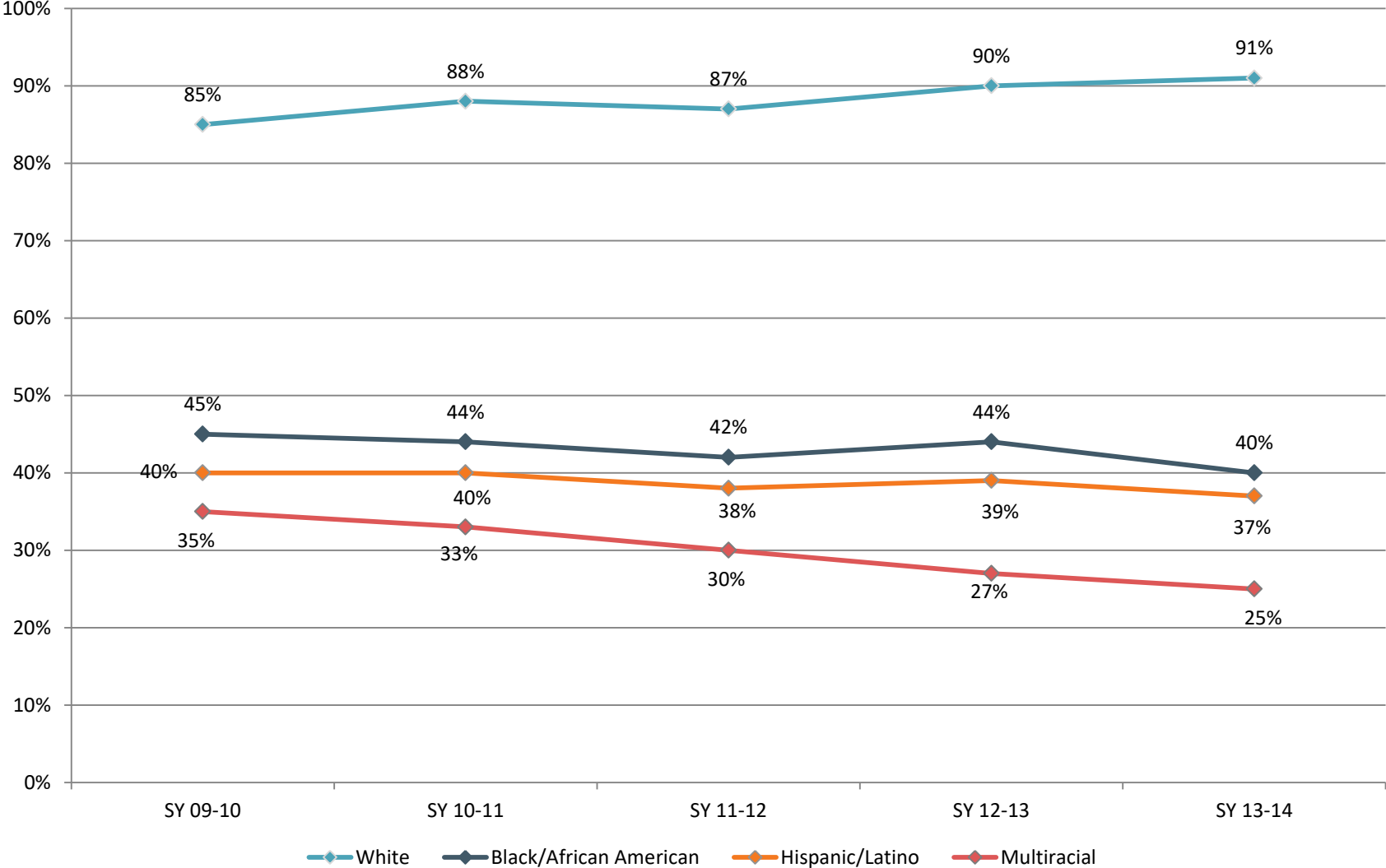
### 5-Year Trend: College Enrollment & FAFSA Completion District Wide



Sources: Camden City Schools, Ohio Department of Education Federal Student Aid Data Center, National Student Clearinghouse



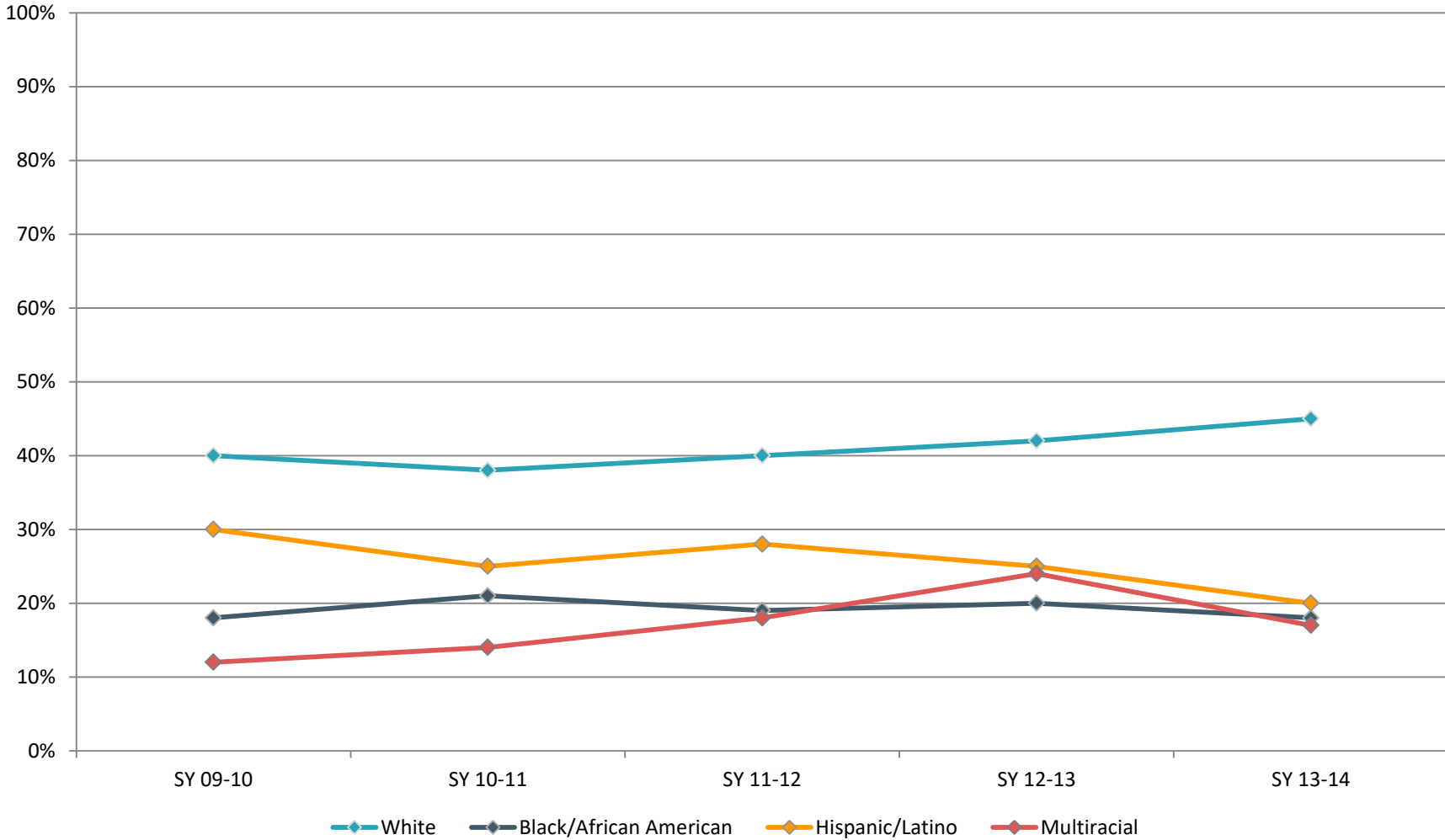
### 5-Year Trend: College Enrollment by Race



Sources: Camden City Schools, National Student Clearinghouse



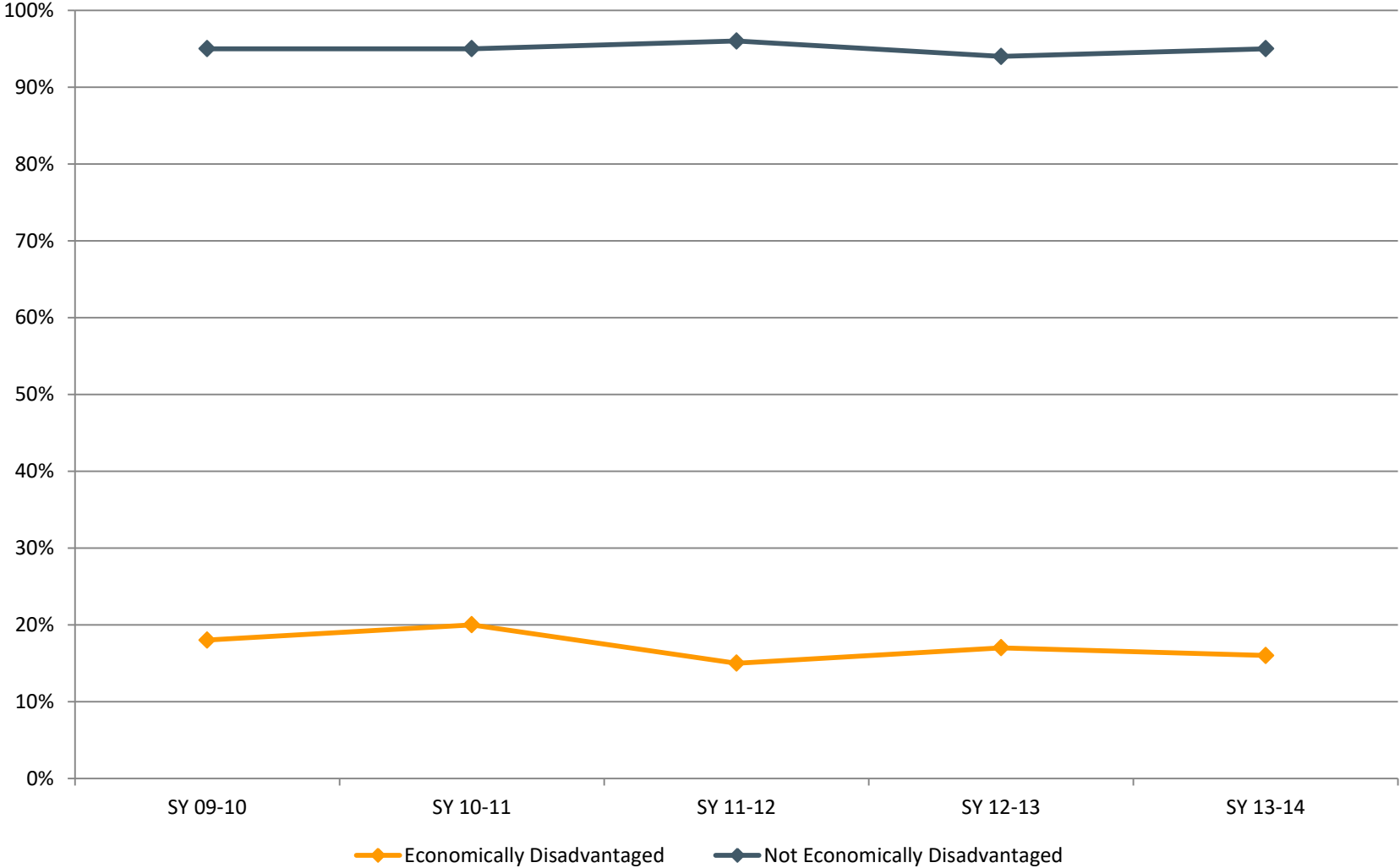
### 5-Year Trend: FAFSA Completion by Race



Sources: Camden City Schools, Ohio Department of Education Federal Student Aid Data Center



### 5-Year Trend: College Enrollment by SES

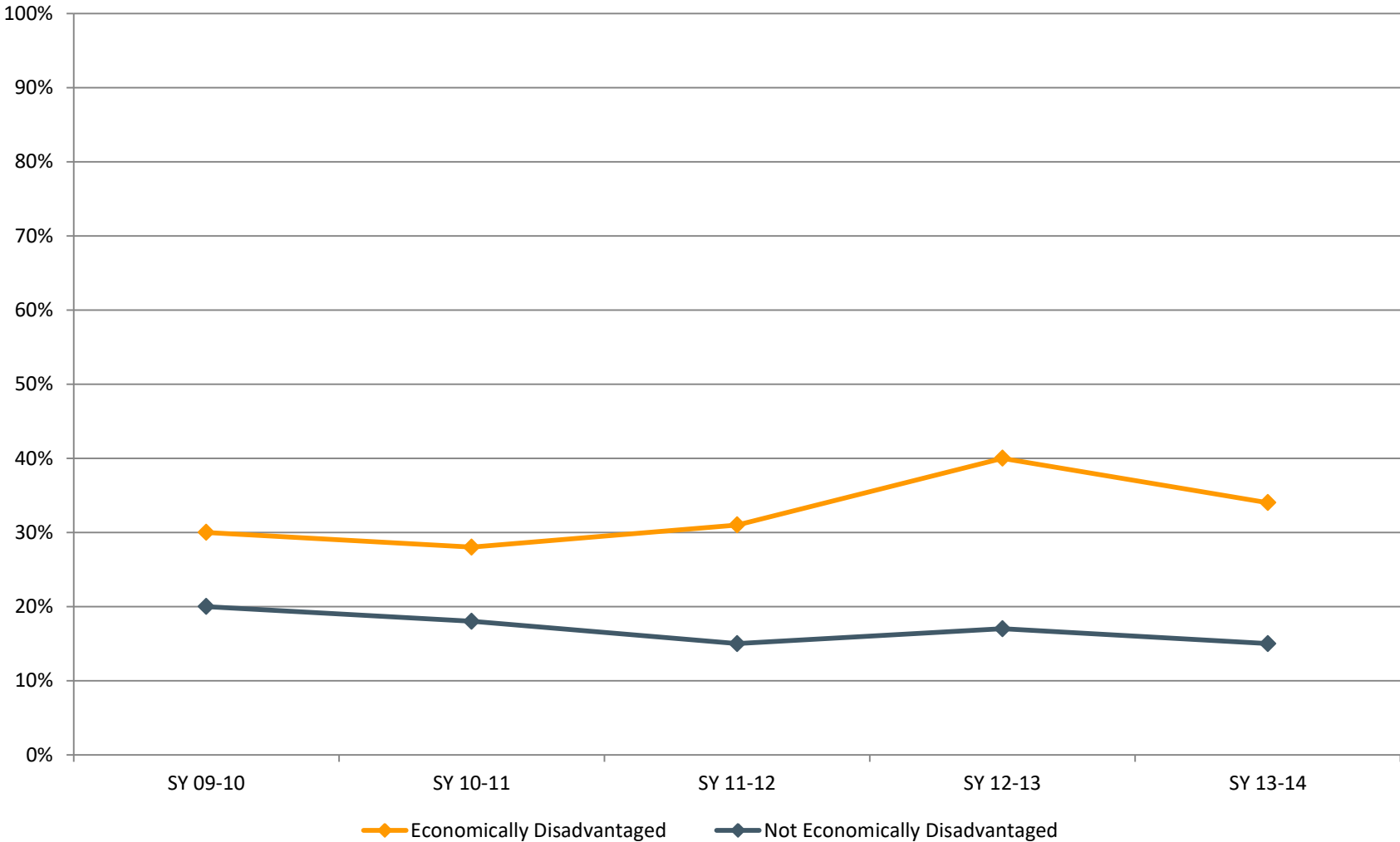


Sources: Camden City Schools, National Student Clearinghouse





### 5-Year Trend: FAFSA Completion by SES



Sources: Camden City Schools, Ohio Department of Education Federal Student Aid Data Center



**StriveTogether**

# **Current Conditions: Program Population and Performance Measures**

**Program Population: 1,000 high school seniors in 11 schools**  
**Performance Measure: # of Students Served (How Much?)**

Partner	# of students served	% White	% Black	% Hispanic	% Multiracial	% Eco Dis	FAFSA	% Enrolled
<b>A</b>	40	15%	65%	20%	0%	93%	56%	50%
<b>B</b>	93	75%	12%	10%	3%	26%	24%	81%
<b>C</b>	100	10%	72%	8%	10%	85%	72%	68%
<b>D</b>	25	0%	100%	0%	0%	100%	39%	32%
<b>E</b>	135	10%	70%	20%	0%	81%	91%	75%
<b>F</b>	150	8%	81%	11%	0%	90%	44%	40%
<b>G</b>	75	15%	78%	7%	0%	85%	70%	45%
<b>H</b>	82	7%	86%	7%	20%	18%	15%	84%
<b>I</b>	150	25%	70%	4%	1%	67%	60%	50%
<b>J</b>	50	80%	10%	10%	0%	15%	5%	97%
<b>K</b>	100	3%	90%	7%	0%	98%	25%	15%

Sources: Camden City Schools, ODE Federal Student Aid Data Center, National Student Clearinghouse



## CEA Partner Program Offerings

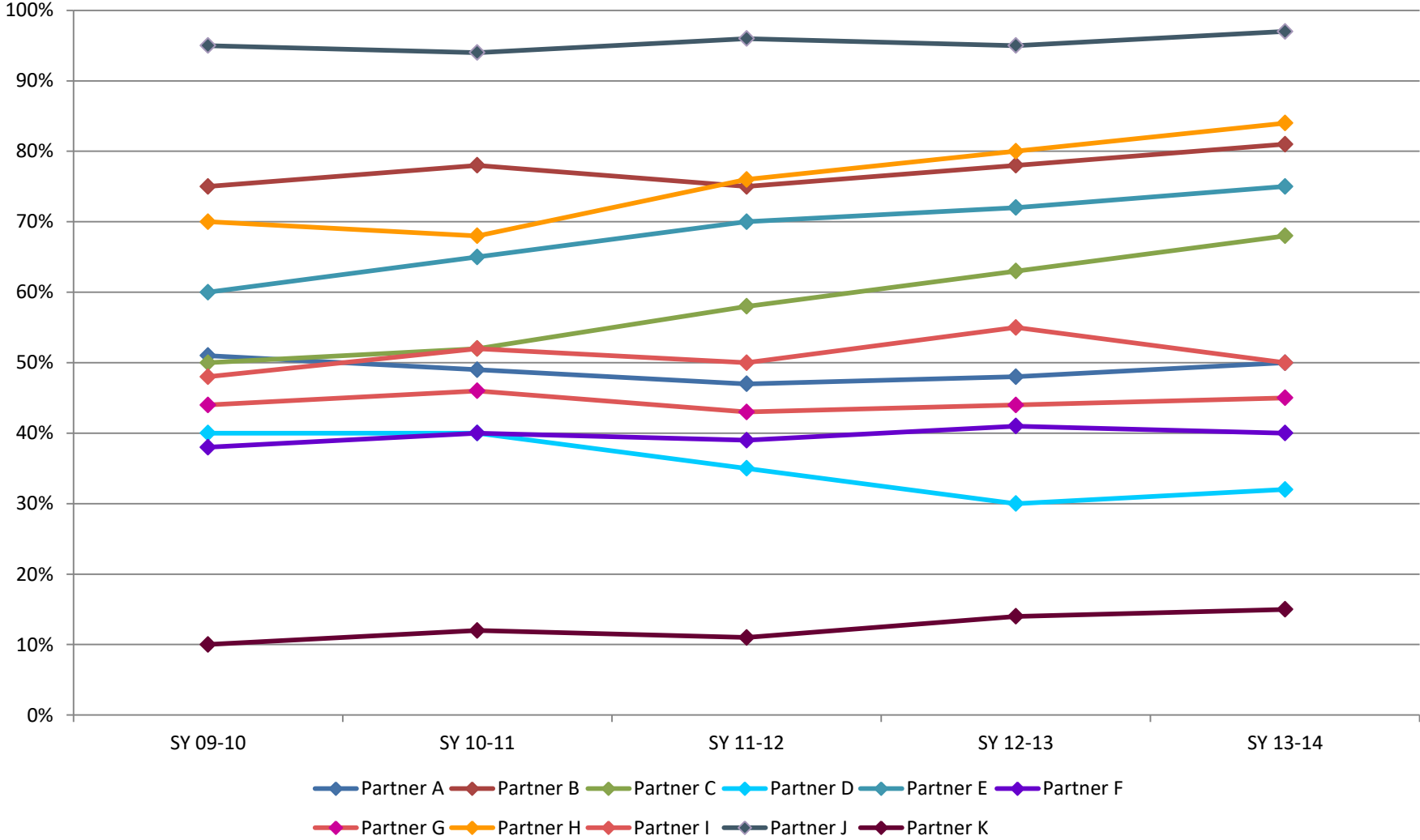
### Performance Measure: Programs Offered (How Much?)

Partner	College Visits	Mentoring	SAT/ACT Prep	Homework Help	OGT Prep	College Application Support	FAFSA Support
<b>A</b>	X	X		X	X		X
<b>B</b>	X		X			X	
<b>C</b>	X				X	X	X
<b>D</b>	X	X		X			
<b>E</b>	X		X		X	X	X
<b>F</b>	X			X	X		
<b>G</b>	X	X			X		X
<b>H</b>	X		X		X	X	
<b>I</b>	X	X		X			X
<b>J</b>	X	X	X	X	X	X	
<b>K</b>	X	X		X			

Source: CEA Partners



### 5-Year Trend: CEA Partner College Enrollment Program Performance (How Well?)



Sources: Camden City Schools, National Student Clearinghouse

